



SubVIs in LabVIEW

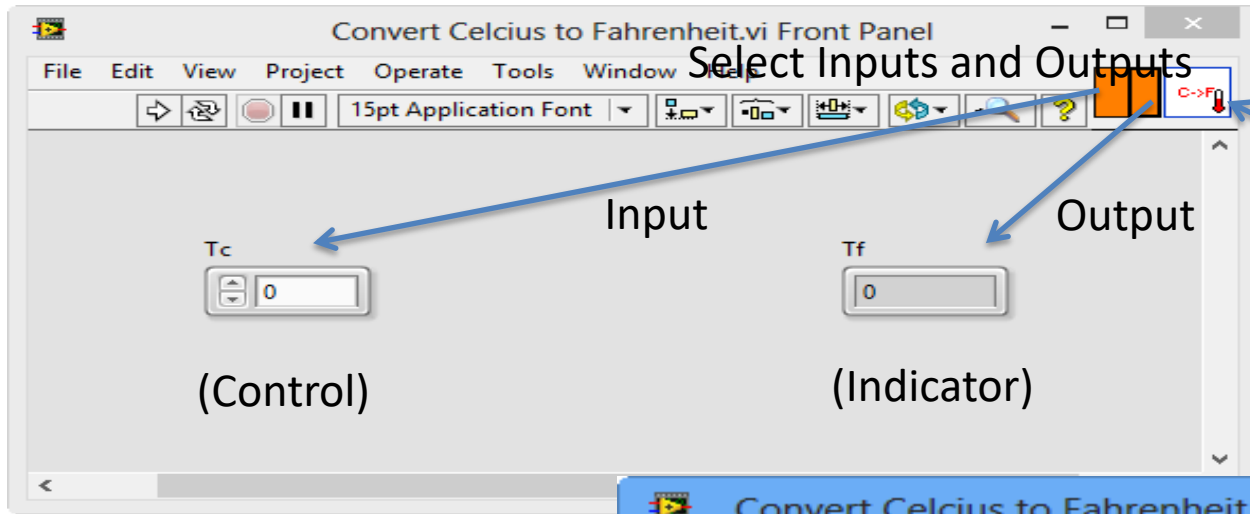
Hans-Petter Halvorsen

SubVIs

- A SubVI is the same as a function or a method used in other languages
- Hundreds or thousands of SubVIs are included with LabVIEW
- But even better: You can create and use your own SubVIs

Why create and use SubVIs?

- You need to use the same operation many times in your code
- Reuse your code
- Hide complicated code
- Easier to maintain your code
- Easier to find bugs and repair them
- ...



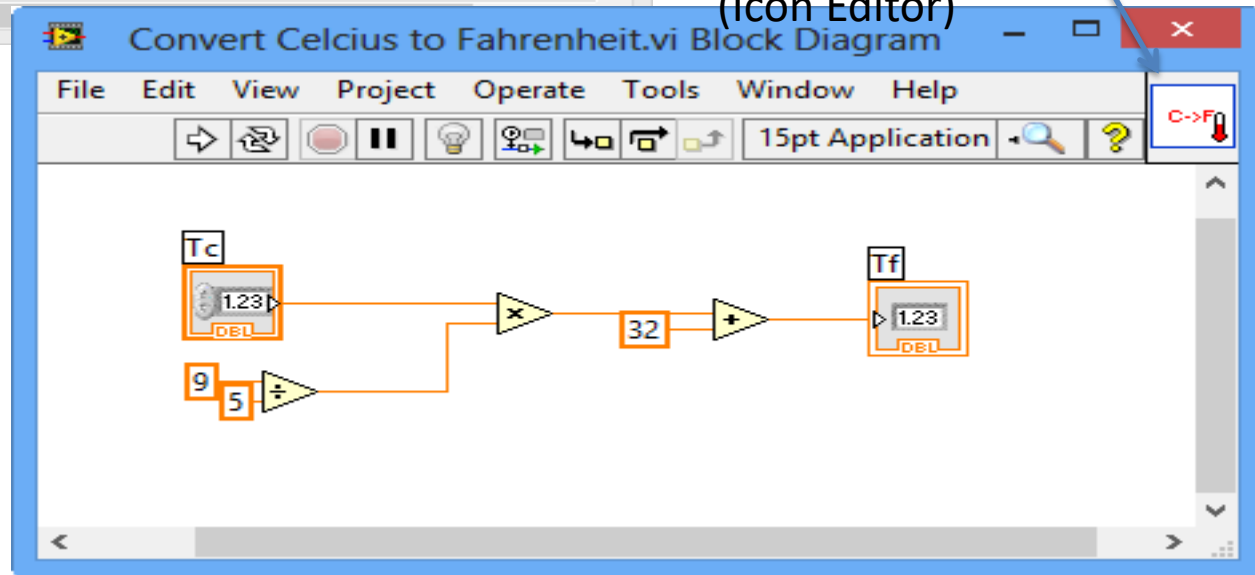
SubVIs

Icon that makes it easier to understand what the SubVI is doing

Create a nice icon as well (Icon Editor)

A SubVI is the same as a function or a method used in other languages

$$T_F = \frac{9}{5} T_C + 32$$



Icon Editor

Use the Icon Editor in order to create a descriptive icon for your SubVI.

Icon Editor (Convert Celcius to Fahrenheit.vi)

Templates **Icon Text** Glyphs Layers

Line 1 text Line 1 color

Line 2 text Line 2 color

Line 3 text Line 3 color

Line 4 text Line 4 color

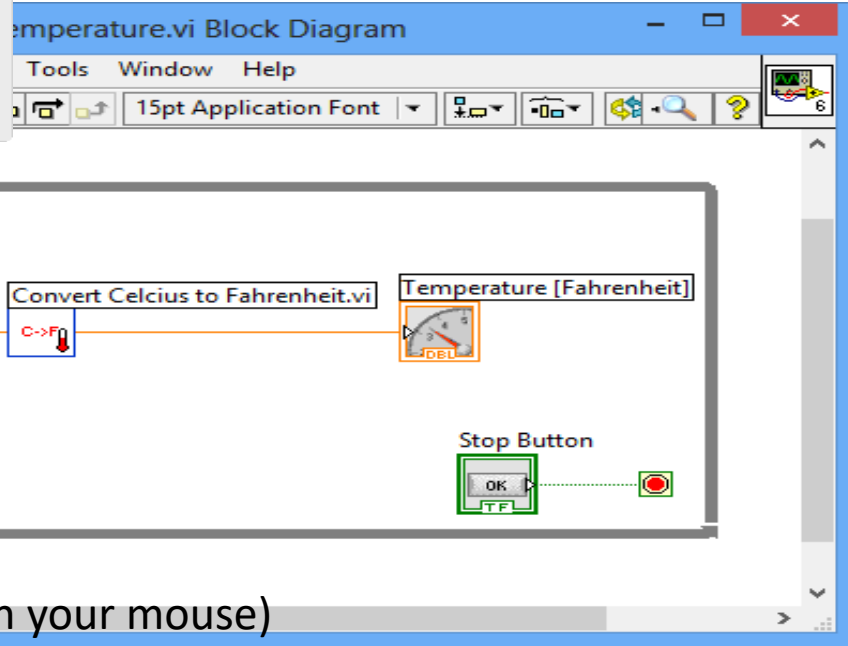
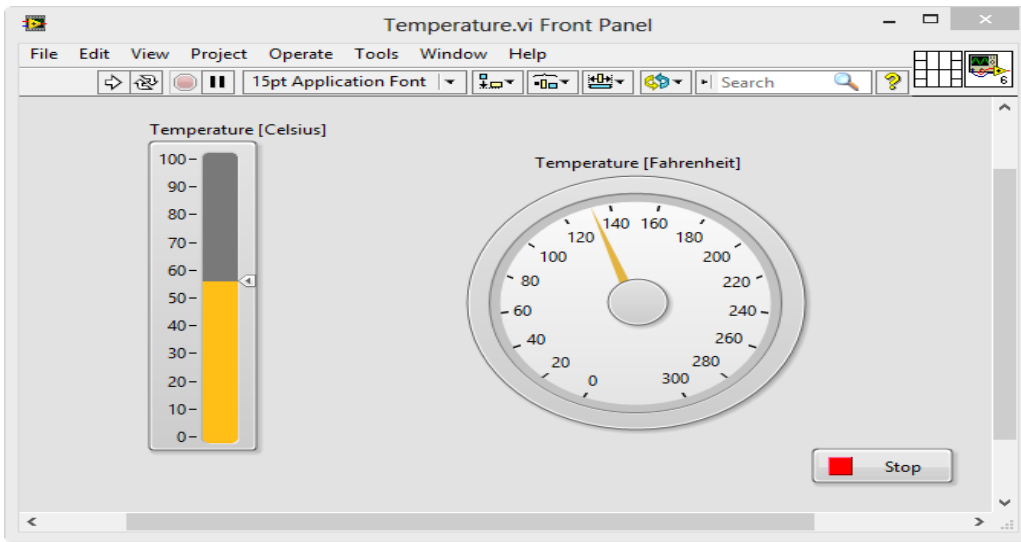
Font:

Alignment:

Color: R: 0 G: 65 B: 220 X: 0 Y: 0 Z: 2

OK Cancel Help

Using SubVIs

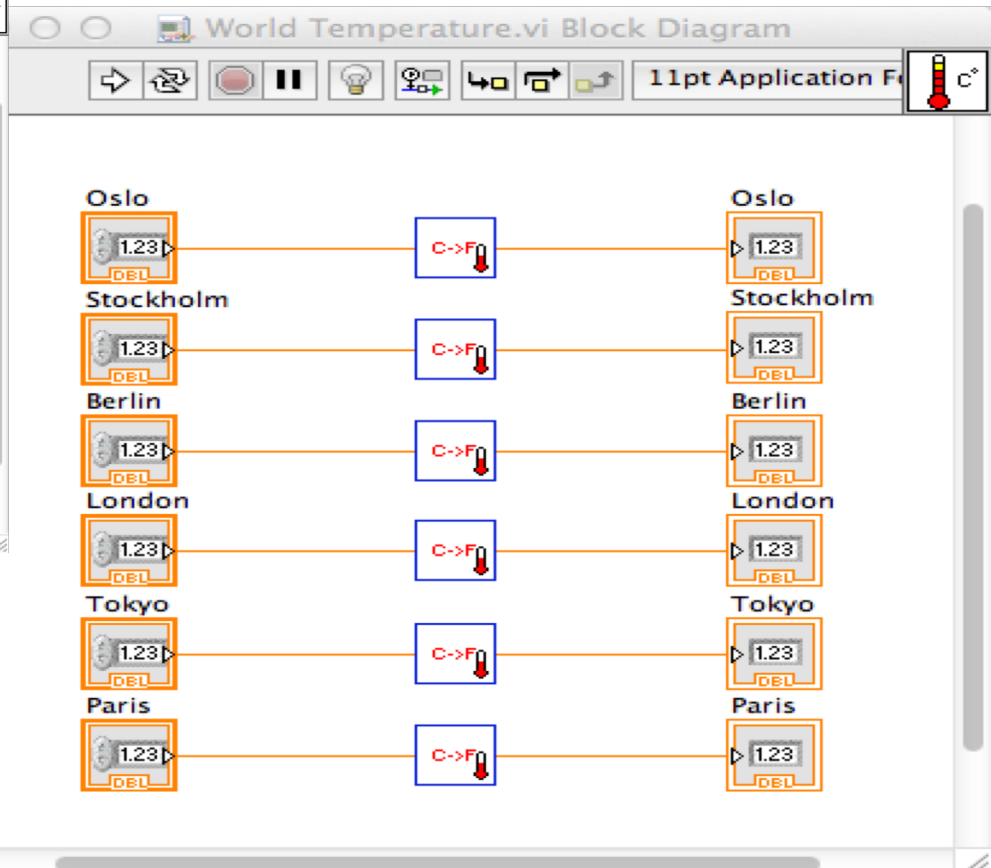
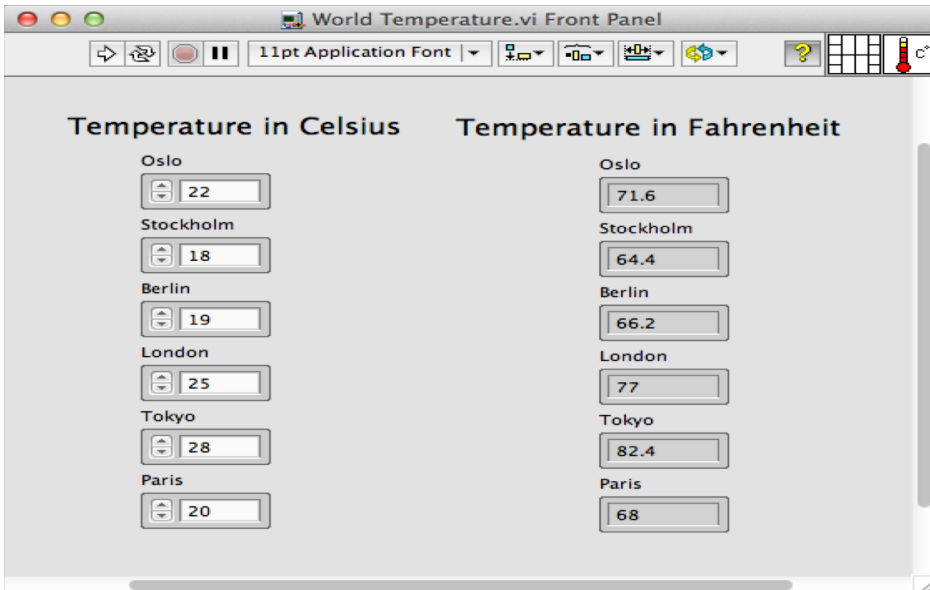


SubVI created in previous slide
(just drag it on the Block Diagram with your mouse)

DEMO

SubVIs

Here you see some of the advantages with using SubVIs.



DEMO

Hans-Petter Halvorsen

University of South-Eastern Norway

www.usn.no

E-mail: hans.p.halvorsen@usn.no

Web: <https://www.halvorsen.blog>

